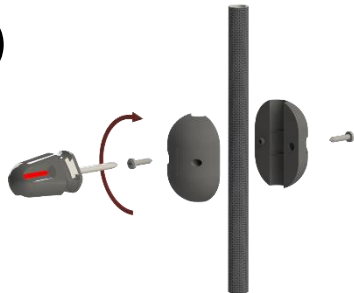


1



2



3



94G0151 - Rev, 2 - 02.09.2021

BROEN-LAB develops, manufactures and sells Laboratory Fittings, Emergency Shower Systems and Eye Wash Systems into a broad spectrum of laboratories and industrial locations; sectors include Pharmaceutical, Food & Beverage and Academia. Our expertise and product quality ensure optimal solutions compliant to all relevant international norms setting new standards in risk mitigation in modern research and development facilities.

BROEN-LAB offer solutions that ensure the functionality, compliance, hygiene, durability and safety are of the highest priority. For over 550 years our products have been integrated into a wide variety of workplaces, laboratories, hospitals and industrial locations, with features that are assessed and designed to be flexible, durable and compliant offering a broad range of options tailored to each location. This inherent design integrity provides confidence in the solution adopted wherever in the world these are applied.

BROEN-LAB is a collaboration partner in the design and layout of your next laboratory and its integrated safety solutions.

HEAD OFFICE

BROEN-LAB A/S
 Drejervænget 2 • DK-5610 Assens
 Tel. +45 6376 6376 • Fax +45 6471 2476
 E-mail: lab@broen-lab.com



BROEN-LAB A/S ISO 9001 CERTIFICATION

In September 1991 BROEN-LAB A/S was certified according to ISO 9001 as one of the first Danish companies. The certification was carried out by Bureau Veritas, Denmark for our Danish site in Assens. The quality management system of BROEN-LAB A/S now complies with detailed specifications laid down by the internationally acknowledged EN ISO 9001:2015. This certification will further contribute to reputation for quality and reliability of BROEN-LAB A/S.

INTERNATIONAL OFFICES

BROEN-LAB Ltd
 Tel. +44 121 522 4515 • +44 121 522 4535
 E-mail: lab@broen-lab.com

BROEN-LAB Singapore Pte. Ltd.
 25 International Business Park • #04-60A
 German Centre • Singapore 609916
 Tel. +45 6376 6376 • Fax +65 6298 0468
 E-mail: lab@broen-lab.com

BROEN-LAB GmbH
 Tel. +45 6376 6376 • Fax +45 6471 2476
 E-mail: lab@broen-lab.com

BROEN-LAB Sverige AB
 Tel. +45 6376 6376 • Fax +45 6471 2476
 E-mail: lab@broen-lab.com

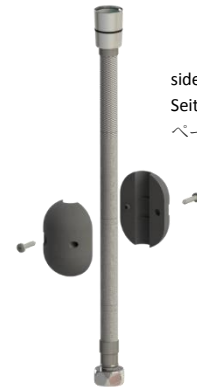
BROEN-LAB Inc.
 15 Constitution Drive • Suite 122 •
 Bedford • NH 03110 • USA
 Tel. +1 603 310 5089
 lab@broen-lab.com

BROEN-LAB HAND-HELD SHOWER

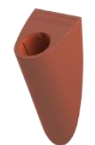
- DK** Installationsvejledning
- UK** Setup guide
- D** Installationsanleitung
- NL** Installatiehandleiding
- JP** セットアップガイド



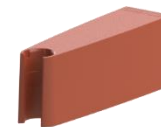
side/page
 Seite/pagina
 ページ 4



side/page
 Seite/pagina
 ページ 1



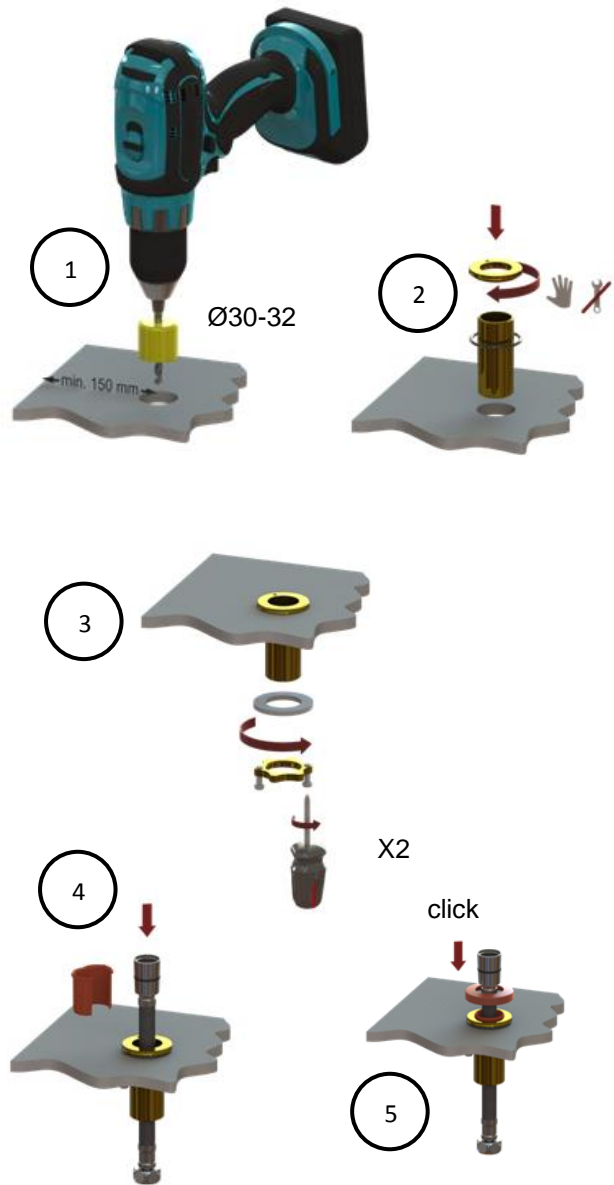
side/page
 Seite/pagina
 ページ 3



side/page
 Seite/pagina
 ページ 2

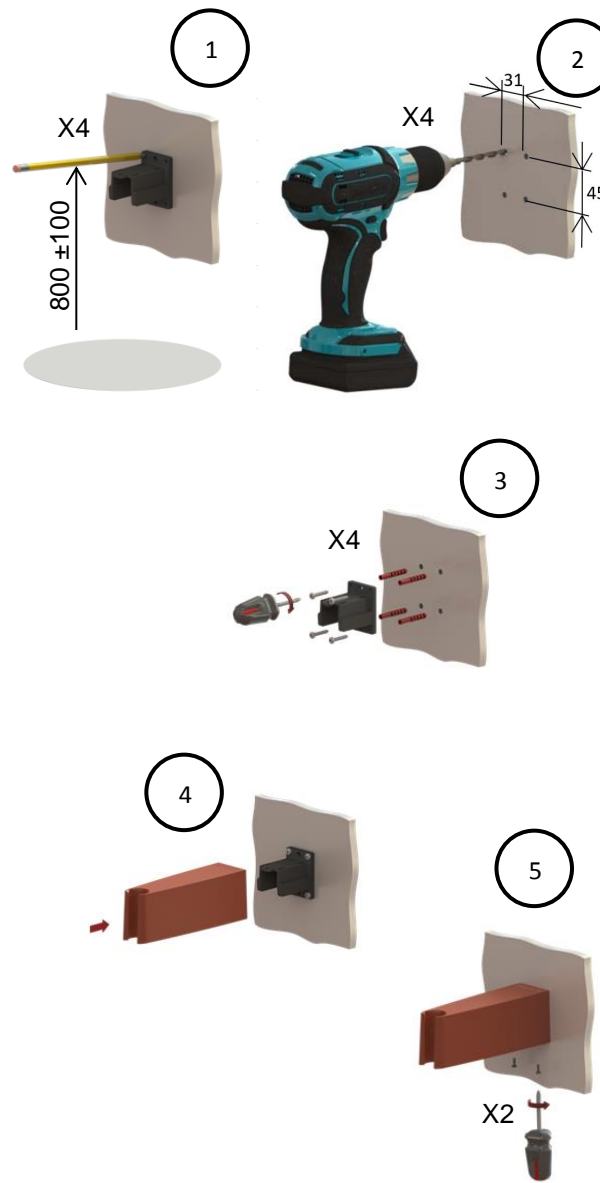
BROEN-LAB

Bordmontage – Table mounting – Tischmontage
Tafelmontage – テーブルマウント



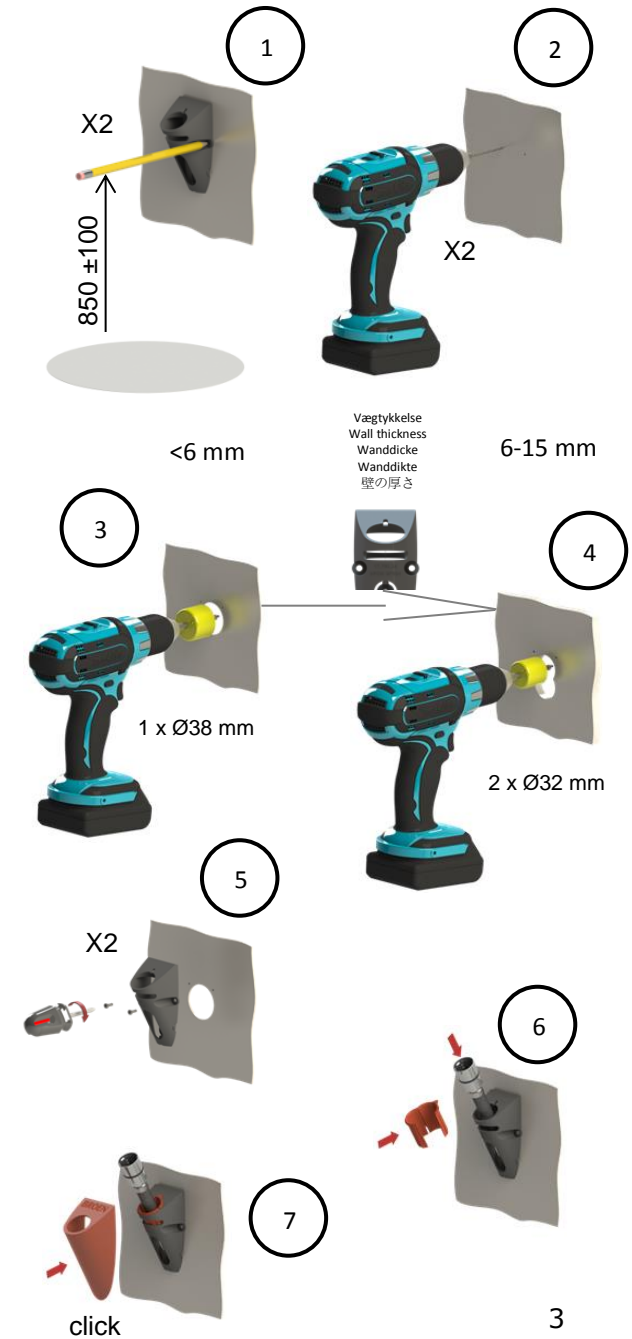
1

Vægmontage – Wall mounting – Wandmontage
Muurmontage - ウォールマウント



2

Panelmontage – Panel mounting – Paneelmontage
Paneelmontage – パネル取付



3